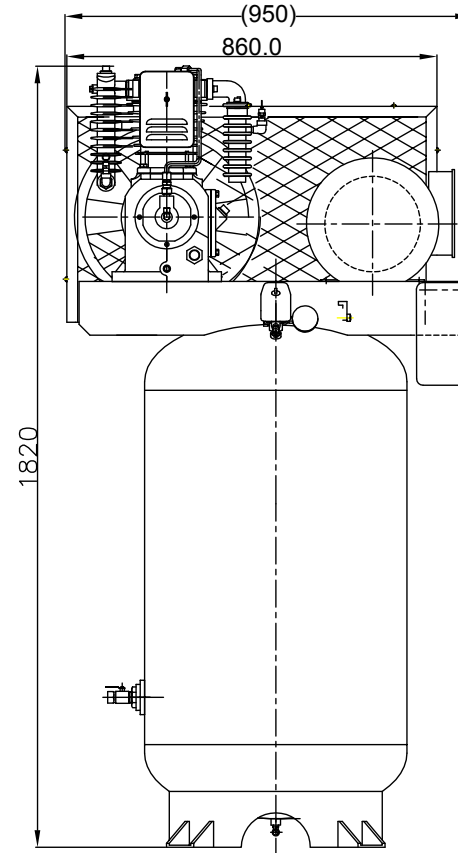
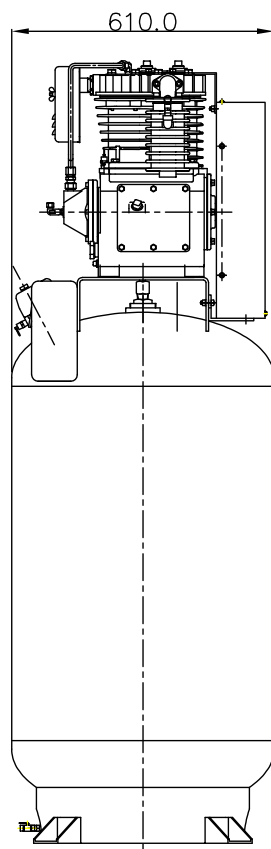
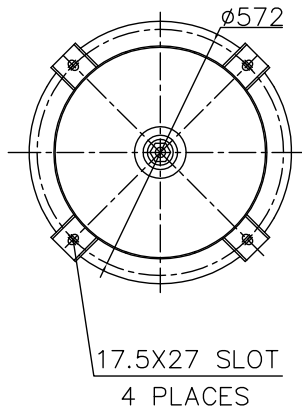




LAPLANTE COMPRESSOR

Model #: V8071-205
Part #: L001030



TRADE SECRET- CONFIDENTIAL AND PROPRIETARY
EXCLUSIVELY OWNED BY LAPLANTE COMPRESSOR, LTD.
ANY COPYING, USE, OR DISCLOSURE WITHOUT THE WRITTEN PERMISSION OF LAPLANTE COMPRESSOR, LTD. IS STRICTLY PROHIBITED. THIS MATERIAL IS PROTECTED UNDER TRADE SECRET AND UNFAIR COMPETITION LAWS. THE EXPRESSION OF THE INFORMATION IS PROTECTED UNDER FEDERAL COPYRIGHT LAWS. VIOLATIONS MAY RESULT IN CIVIL AND CRIMINAL FINES AND PENALTIES.

- SPECIFICATIONS:**
- Pump:**
- ◆ Type: LP205
 - ◆ Cylinders: 2
 - ◆ LP Bore: 4.13" / 105 mm
 - ◆ HP Bore: 2.16" / 55 mm
 - ◆ Stroke: 3.5" / 89 mm
 - ◆ RPM: 890
 - ◆ Flywheel: 17" / 430 mm
 - ◆ Belts: 2B77
- Motor:**
- ◆ Size: 7.5 HP / 5.5 Kw
 - ◆ Frame: 213T
 - ◆ Voltage: 208-230
 - ◆ Phase: Single
 - ◆ Frequency: 60 Hz
 - ◆ Amps: 30-33
 - ◆ RPM: 1750
- Tank:**
- ◆ Vertical 80 Gal / 303 L
 - ◆ Max Pressure: 200 PSI
 - ◆ ASME Certified
- Controls:**
- ◆ Pressure Switch
 - ◆ IEC Rated Magnetic Starter

CFM Piston Displacement	ACFM	ACFM	ACFM
24.2	@ 125 PSI	@ 150 PSI	@ 175 PSI
	19.3	18.72	18.04

Standard Packaging Weight:
Single Piece: 672 lbs./ 305 Kg
Crated: 793 lbs./ 360 Kg

Container Quantities:
20': 16 Units
40': 32 Units

LAPLANTE
COMPRESSOR
1830 W. 15th St.
Houston, TX 77008
Phone: 713-635-6291
Fax: 713-635-6360
Email: Sales@LaplanteCompressor.com
Website: www.LaplanteCompressor.com