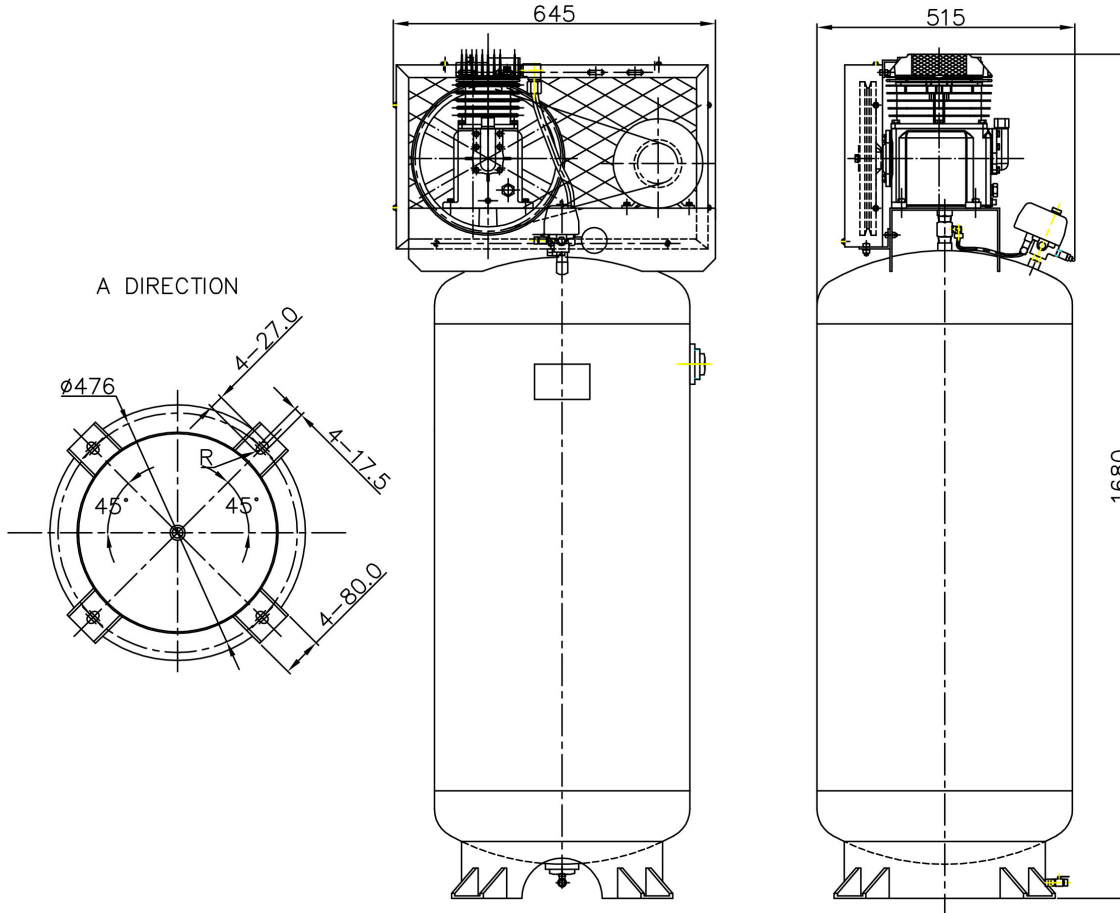




LAPLANTE COMPRESSOR

Model #: V60215-755
Part #: L001019



TRADE SECRET- CONFIDENTIAL AND PROPRIETARY
EXCLUSIVELY OWNED BY LAPLANTE COMPRESSOR, LTD.
ANY COPYING, USE, OR DISCLOSURE WITHOUT THE WRITTEN PERMISSION OF LAPLANTE COMPRESSOR, LTD. IS STRICTLY PROHIBITED. THIS MATERIAL IS PROTECTED UNDER TRADE SECRET AND UNFAIR COMPETITION LAWS. THE EXPRESSION OF THE INFORMATION IS PROTECTED UNDER FEDERAL COPYRIGHT LAWS. VIOLATIONS MAY RESULT IN CIVIL AND CRIMINAL FINES AND PENALTIES.

- SPECIFICATIONS:**
- Pump:**
- ◆ Type: LPSS7550
 - ◆ Cylinders: 2
 - ◆ Bore: 2.95" / 75 mm
 - ◆ Stroke: 1.97" / 50 mm
 - ◆ RPM: 880
 - ◆ Flywheel: 12" / 305 mm
 - ◆ Belts: 1A50
- Motor:**
- ◆ Size: 3 HP / 2.24 Kw
 - ◆ Frame: 56
 - ◆ Voltage: 208-230
 - ◆ Phase: Single
 - ◆ Frequency: 60 Hz
 - ◆ Amps: 15-16
 - ◆ RPM: 3450
- Tank:**
- ◆ Vertical 60 Gal/ 228 L
 - ◆ Max Pressure: 175 PSI
- Controls:**
- ◆ Pressure Switch

CFM Piston Displacement	ACFM	ACFM	ACFM
13.72	@ 90 PSI	@ 125 PSI	@ 145 PSI
	10.81	9.23	8.62

Standard Packaging Weight:
Single Piece: 282 lbs./ 128 Kg
Crated: 337 lbs. / 153 Kg

Container Quantities:
20': 27 Units
40': 60 Units

LAPLANTE
COMPRESSOR
1830 W. 15th St.
Houston, TX 77008
Phone: 713-635-6291
Fax: 713-635-6360
Email: Sales@LaplanteCompressor.com
Website: www.LaplanteCompressor.com